


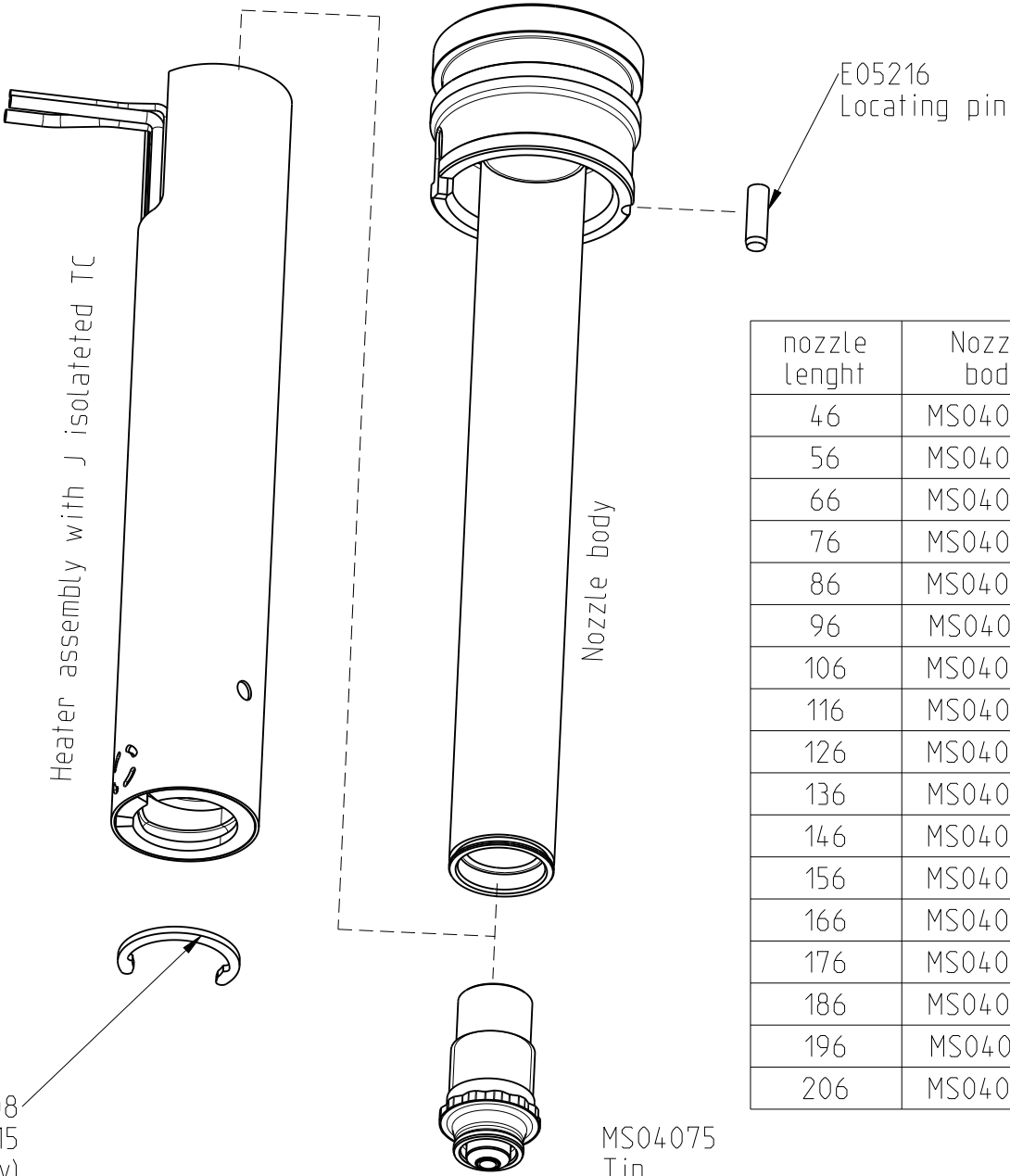
Technical drawing of a mechanical part with dimensions and tolerances. The drawing includes a central circular feature with a dashed outline and a solid outline. The part has a complex profile with various angles and radii. Key dimensions and tolerances are as follows:

- Overall Dimensions:**
  - Total height:  $11,9 \pm 0,2$
  - Height from base to center:  $7 \pm 0,2$
  - Height from base to top of central feature:  $5,7 \pm 0,1$
  - Height from base to bottom of central feature:  $3,1 \pm 0,05$
  - Height from base to top of right side:  $9,909 \pm 0,02$
- Angles:**
  - Top left:  $50^\circ$
  - Top right:  $30^\circ$
  - Bottom center:  $40^\circ$
  - Bottom right:  $30^\circ$
- Radii:**
  - Top left:  $R0,2$
  - Top right:  $R1$
  - Bottom center:  $R3,5$
  - Bottom right:  $R1$
- Surface Tolerances:**
  - Top left:  $Rz\ 1$
  - Top right:  $Ra\ 0,8$
  - Bottom center:  $Rz\ 1$
  - Bottom right:  $Rz\ 1$
- Feature Tolerances:**
  - Top left hole:  $\varnothing 10 \begin{smallmatrix} +0,01 \\ 0 \end{smallmatrix}$
  - Top right hole:  $\varnothing 0,01$
  - Bottom center hole:  $\varnothing 0,8 \begin{smallmatrix} +0,005 \\ 0 \end{smallmatrix}$  min.
  - Bottom right hole:  $\varnothing 2 \begin{smallmatrix} +0,005 \\ 0 \end{smallmatrix}$  max.
  - Bottom center hole:  $\varnothing 0,01$
  - Bottom right hole:  $\varnothing 0,01$
- Surface Finish:**
  - Top left:  $S\ \varnothing\ 9$
  - Bottom center:  $0,02\ A$
  - Bottom right:  $0,02\ A$

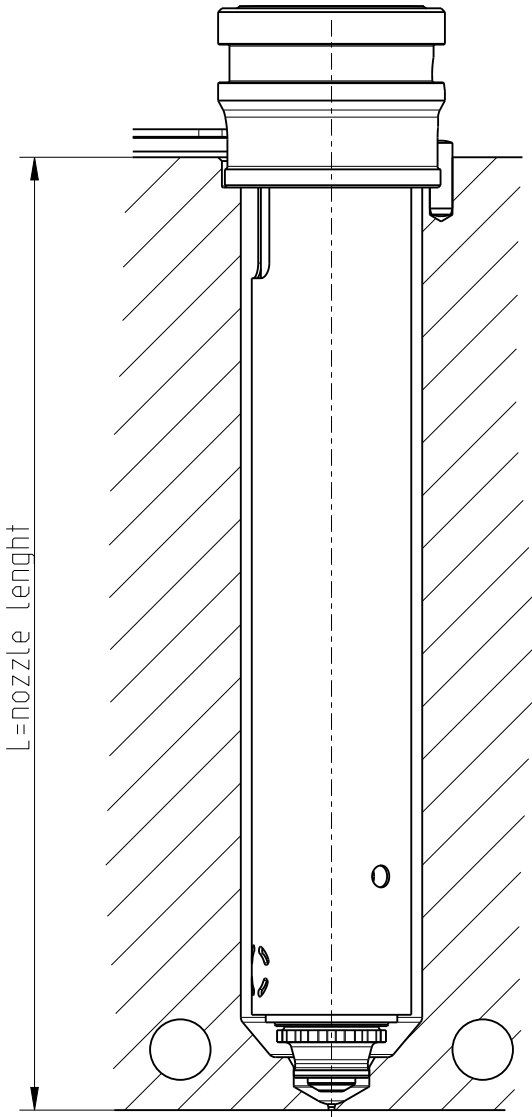
--		--		--			
date		name		modification			
The content of this document is strictly confidential. All rights are reserved by Otto Männer GmbH. This document or parts thereof may not be copied, distributed or used in any way without the prior written agreement of Otto Männer GmbH. Any unauthorized use can be prosecuted.							
				old id.no:			
pos.		piece		all dimensions in mm			
				material no.			
<div style="display: flex; align-items: center;"> <div style="flex: 1;">  </div> <div style="flex: 1;"> <p>Otto Männer GmbH Unter Gereuth 9-11 D-79353 Bahlingen a.K. www.maenner-group.com</p> </div> </div>				identification number:		rev :	
				MPN-10-29-VSA10-A		00	
				part number:			
hardened HRC: --		tool type:		object:		CREO	
<div> <div>nicotrated</div> <div></div> <div>high tempered</div> </div>							
all edges on partingline are sharp		part name:		Nozzle MPN-10-29-VSA10-xxx-A		A3	
exact tuned with molded part							
<div> <div>X</div> <div>dimensions without tolerance details under DIN ISO 2768-fH</div> </div>							
polished		--		scale:		sheet 1	
highly polished						of 3	
structured				1/1		<div> <div></div> <div></div> <div></div> </div>	
				engineered		18/12/25	
				drawn		18/12/25	
				checked			

nozzle length	Heater assembly with J isolated TC	Power Watt
46	MPH10046-A	220
56	MPH10056-A	220
66	MPH10066-A	220
76	MPH10076-A	220
86	MPH10086-A	220
96	MPH10096-A	260
106	MPH10106-A	260
116	MPH10116-A	260
126	MPH10126-A	260
136	MPH10136-A	300
146	MPH10146-A	300
156	MPH10156-A	300
166	MPH10166-A	300
176	MPH10176-A	350
186	MPH10186-A	350
196	MPH10196-A	350
206	MPH10206-A	350

B03108  
Ring type H Ø15  
(Included in heater assembly)

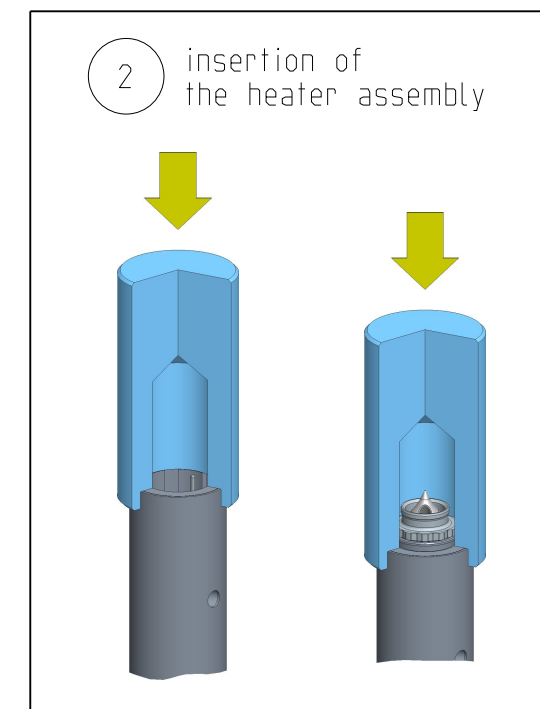
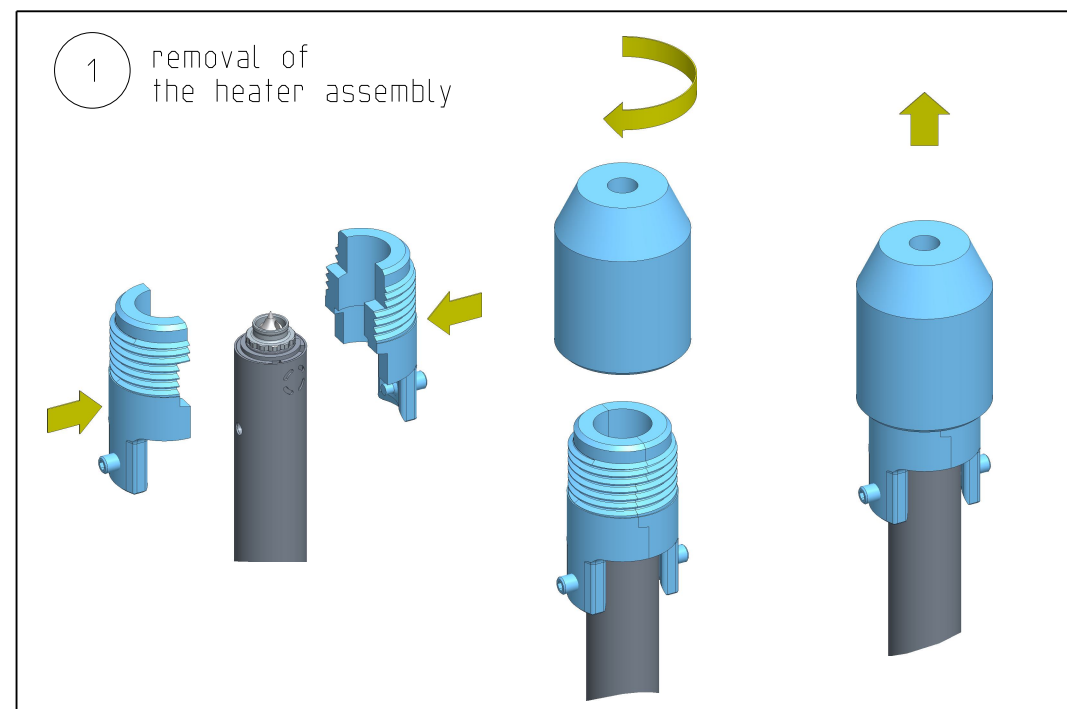
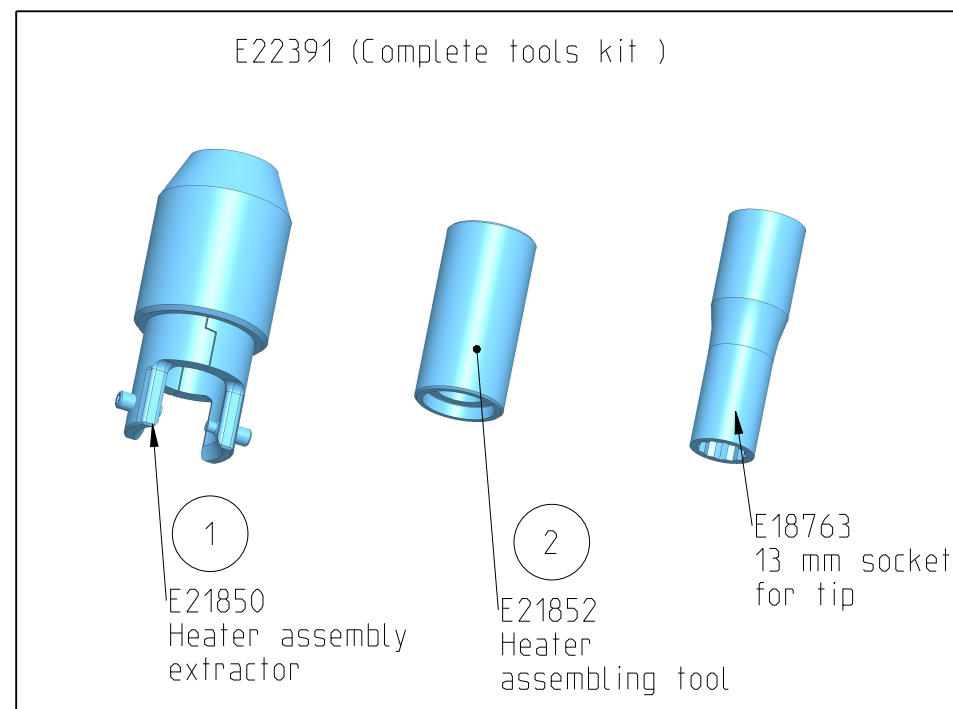


nozzle length	Nozzle body
46	MS04036X
56	MS04037X
66	MS04038X
76	MS04039X
86	MS04040X
96	MS04041X
106	MS04042X
116	MS04043X
126	MS04044X
136	MS04045X
146	MS04046X
156	MS04047X
166	MS04048X
176	MS04049X
186	MS04050X
196	MS04051X
206	MS04052X



hotrunner assembly				Nozzle MPN-10-29-VSA10-xxx-A	
<b>männer</b>				--	Männer Performance Line
				--	
				18/12/25	Massara
				MPN-10-29-VSA10-A.00	

Attention: tools not included in the standard supply.  
Must be ordered separately.



hotrunner assembly				Nozzle MPN-10-29-VSA10-xxx-A	
männer		18/12/25	Massara	--	
	MPN-10-29-VSA10-A.00			Männer Performance Line	--